



### PRESENTATION:

The digital timer is a plug-on controller specially design for Solenoid valves. The unit offers an easy time cycle programming. The switching time can be set with the "ON" touch between 0 and 99 seconds. The "OFF" touch allows to adjust the delay time between two switching cycles from 0 to 99 minutes. The unit is ready to control the valve as soon as the power is switched on. The ON/OFF sequence will be repeated so long as the unit is powered. Two LEDS indicate the output status. A "TEST" button is provided to check the cycle settings and to restart the control sequence from the output status "ON". Compared to analog solution it offers higher precision 'high. Through the display you can see the set times.

### USE:

Condensate drain systems control  
Timed systems.

### TECHNICAL DETAILED:

Supply voltage: 24 to 240V AC/DC±10% 50/60Hz  
Output voltage: same as supply voltage  
Load current: 1A max  
Standby current: 4 mA max  
Operating temp. range: - 40°C to + 60°C  
Connector: EN 175301-803 / ISO 4400  
Environmental protection: IP65 (assembled with delivered gaskets)  
Housing dimensions: 86 x 44 x 20,5mm  
Off time: from 0 to 9,5 min., step 0,5 min.  
                  from 10 min. to 99 min., step 1 min.  
On time: from 0s to 9,5s., step 0,5s.  
                  from 10s to 99s., step 1s.  
Repeat accuracy: ± 0,01%  
Indicators: Green LED - Off phase  
                  Red LED - On phase

### MATERIALS:

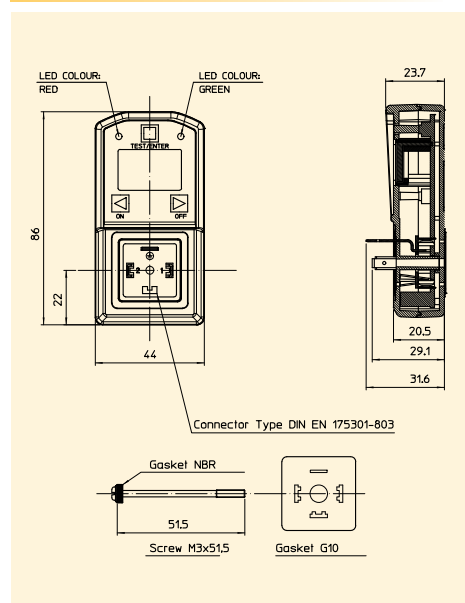
Housing: ABS V0  
Gasket:NBR(nitrile)

### ACCESSORIES:

Connectors for S.V. (to be order separately)  
Pg 9 (6÷8mm) or Pg 11(8÷10mm)

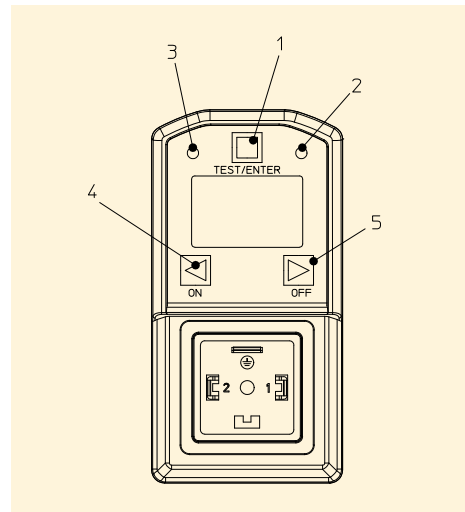


### DIMENSIONS:



### DESCRIPTION:

- |                             |                             |
|-----------------------------|-----------------------------|
| 1. Push-button TEST         |                             |
| 2. Green Led not supplied : | output power absent (OFF)   |
| 3. Red Led load supplied :  | output power present (ON)   |
| 4. Touch "ON":              | regulation time "ON"        |
| 5. Touch "OFF":             | pause time regulation "OFF" |



The "ODE " reserves the right to carry out technical and aesthetic modifications without prior notification.